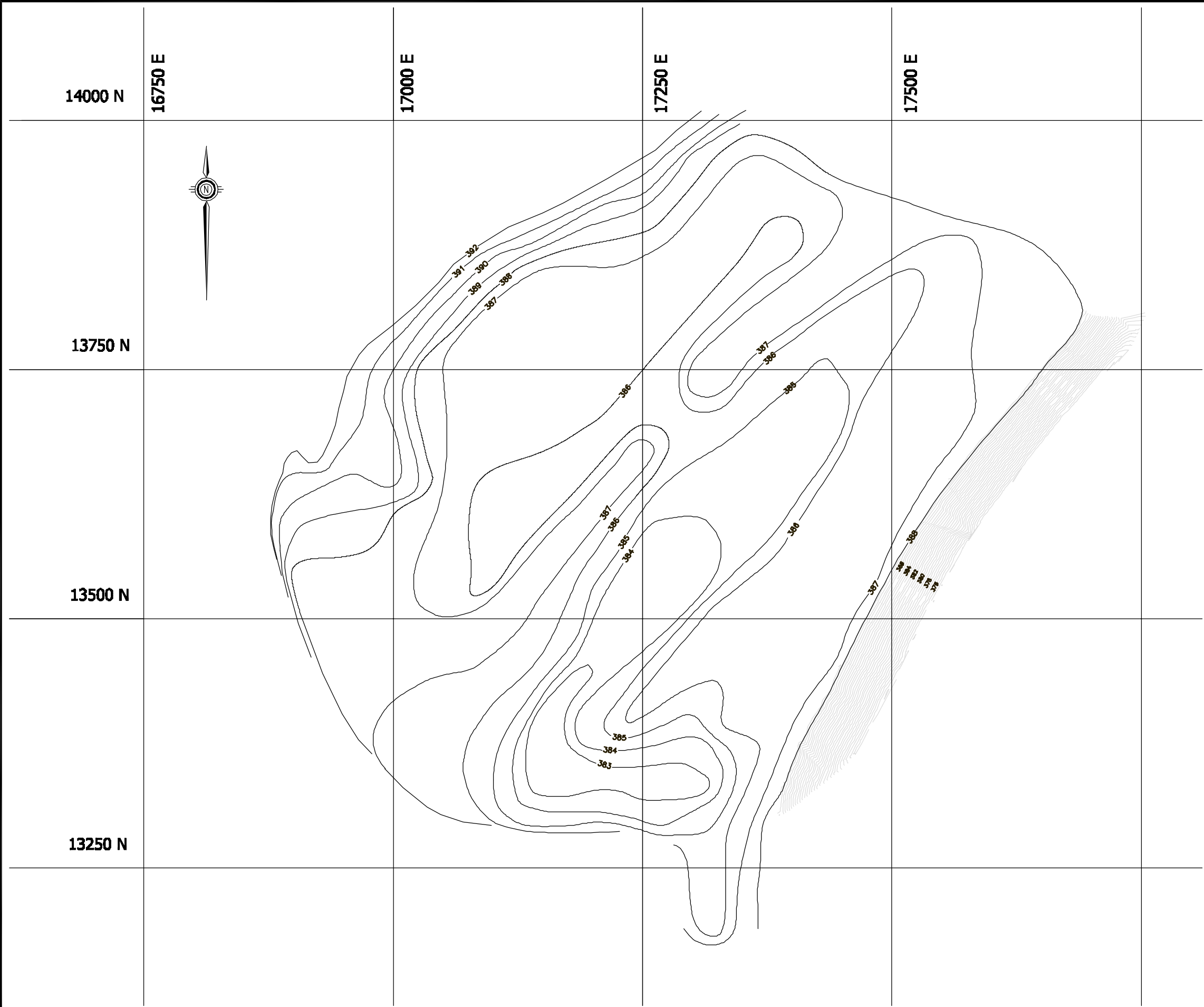


0255-008-09 011 FIGURE\_17.dwg



CLIENT: NANISIVIK MINE,  
A DIVISION OF CANZINCO LTD.

NOTES:  
1.CONTOURS DEVELOPED USING SURFACE CELL  
TOPOGRAPHY AS SURVEYED BY S.A.S. SEPTEMBER,  
2003.  
  
2.CONTOURS ALSO ASSUME GRADING OF TOP 0.5m OF  
TAILINGS FROM TOPOGRAPHIC HIGHS INTO  
TOPOGRAPHIC LOWS.

80m 0 80m 160m 240m

AS A MUTUAL PROTECTION TO OUR CLIENT, THE PUBLIC AND OURSELVES, ALL REPORTS AND DRAWINGS ARE SUBMITTED FOR THE CONFIDENTIAL INFORMATION OF OUR CLIENT FOR A SPECIFIC PROJECT AND AUTHORIZATION FOR USE AND/OR PUBLICATION OF DATA, STATEMENTS, CONCLUSIONS OR ABSTRACTS FROM OR REGARDING OUR REPORTS AND DRAWINGS IS RESERVED PENDING OUR WRITTEN APPROVAL.

REV.	DATE	REVISION NOTES	DRAWN	CHECKED	APPROVED

SCALE:	AS SHOWN	
DATE:	FEB 2004	
DRAWN:	CJT	
DESIGNED:	GKC	
CHECKED:	JWC	
APPROVED:	JWC	

PROJECT	WEST TWIN DISPOSAL AREA CLOSURE PLAN		
TITLE	SURFACE CELL TAILINGS GRADING PLAN		
PROJECT No.	DWG No.	REV.	
0255-008-09	17	0	

BGC

**BGC ENGINEERING INC.**  
AN APPLIED EARTH SCIENCES COMPANY  
Calgary, AB Phone: (403) 250 5185